

# INTEGRUM COMPANIES

## CUTTING-EDGE TOOLS FOR MONITORING RUSSIA AND CIS COUNTRIES

This is a new analytical service offering official information on more than 6 million Russian and foreign companies and private entrepreneurs in Russia. It provides instant access to a vast array of valuable information – from registration documents to financial statements to corporate structure to court judgments.

### Closed stock corporation "LUKOJL-Chernomor'e"

#### Company Card

Name	♀ JSC "LUKOIL-CHEMNOMORYE"
Short Name	♀ ZAO "LUKOJL-Chernomor'e"
Legal Address	<a href="#">353900, Krasnodarskij kraj, g Novorossijsk, Naberezhnaya imeni Admirala Serebryakova, d 23</a>
Actual address	353910, Krasnodarskij kraj, g. Novorossijsk, Admirala Serebryakova nab., d. 23
Phone	<a href="#">8617805001</a>
Actual phone	<a href="#">605001</a>
Fax	<a href="#">605009</a>
Chief	♀ <a href="#">Zashikhin Aleksej Vladimirovich</a> , CEO
Main Activity	Other cargo handling, 63.11.2
Employs	200 - 500 pers.
Primary Registration Date	25/04/1994
Registration Date	28/09/2002

#### General Information

##### Company Card

[Registration Data](#)

##### Company Structure

[Owners](#)

[Subsidiaries](#)

[Structure Diagram](#)

##### Relationships

[Related persons](#)

[Same chief](#)

[Same location](#)

##### Full Balance Sheet

[IAS/GAAP Reports](#)

#### Full Balance Sheet

01.01.2011

#### Balance sheet (form №1 by ARGDC)

Assets	Row code	Start of acc. year	End of acc. year
<b>I. NONCURRENT ASSETS</b>			
Intangible assets	1-110	0	0
Fixed assets	1-120	39,920,000	66,382,000
Buildings under construction	1-130	15,523,000	0
Income-bearing investments in tangible assets	1-135	0	0
Long-term financial investments	1-140	451,000	451,000
Deferred tax assets	1-145	2,173,000	1,087,000
Other noncurrent assets	1-150	0	95,000
<b>TOTAL in Section 1</b>	<b>1-190</b>	<b>58,067,000</b>	<b>68,015,000</b>
<b>II. CURRENT ASSETS</b>			
Inventories	1-210	6,565,000	2,708,000
raw materials and other inventories	1-211	748,000	694,000
livestock	1-212	0	0
work in progress	1-213	0	0
finished goods and goods for resale	1-214	4,291,000	728,000
goods dispatched	1-215	0	0
deferred expenses	1-216	1,526,000	1,286,000

#### General Information

[Company Card](#)

[Registration Data](#)

#### Company Structure

[Owners](#)

[Subsidiaries](#)

[Structure Diagram](#)

#### Relationships

[Related persons](#)

[Same chief](#)

[Same location](#)

#### Full Balance Sheet

[IAS/GAAP Reports](#)

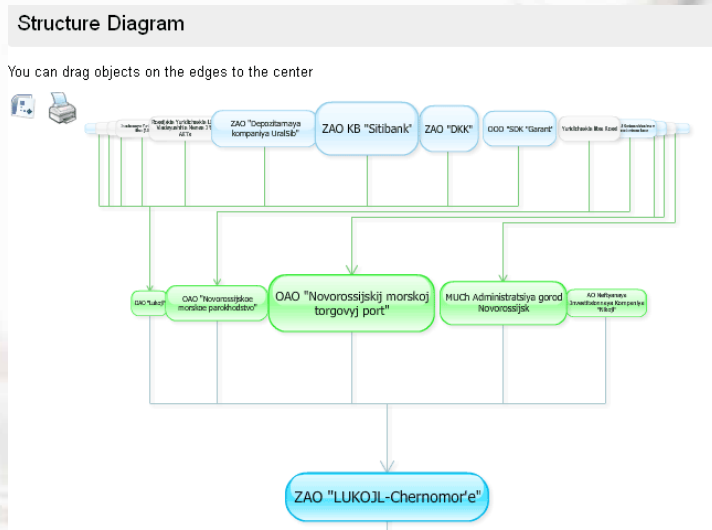
#### Subscribers gain access to the following information:

- financial statements
- production output
- registration details, addresses and contact data
- banking information
- financial indicators, financial ratios
- investments
- government contracts
- manufacturing prices and consumer prices
- foreign operations of companies, exports and imports
- number of employees and salaries

## Sources for the data provided on **Integrum Companies** include:

- Federal State Statistics Service
- Federal Tax Office
- Uniform State Register of Legal Entities of the Russian Federation
- Uniform State Register of Private Entrepreneurs Federal Financial Markets Service
- Federal Treasury
- Central Bank of Russia
- Archive of judgments by Arbitrazh Courts
- The official journal "Vestnik gosudarstvennoi registratsii" ("Government Registration Gazette")
- The newspapers "Kommersant" and "Rossiiskaya Gazeta"
- The agencies AK&M and AZIPI-Inform
- The Russian Agency for Patents and Trademarks
- The "Valaam" Information Agency

The specialized search engine enables users not only to find specific organizations, but also to sort companies by items in the financial statements, type of company and industry, legal organizational structure and many other criteria. All data are presented in the form of graphs and tables and reports can be generated in Excel or Word format and printed out. The graphic interface provides an overview of the entire structure of the organization, making it possible to identify direct and indirect links to a company's founders, officers and subsidiaries. The system also allows clients to save graphics into separate files in Visio format, where they can make further edits to the images.



This service provides information about:

- how old and stable potential partners are
- trends in the company's financial situation
- presence/absence of long-term business partners and their feedback on the partnership
- presence/absence of fraud in the history of the enterprise or its managers
- change in the company's actual address and changes relating to its management or founders
- presence/absence of judicial or administrative proceedings relevant to the enterprise or its executives
- unauthorized use of credit facilities, etc.

**INTERESTED IN MORE INFORMATION ON  
INTEGRUM'S SERVICES, SUBSCRIPTION OPTIONS,  
OR A FREE TRIAL? PLEASE CONTACT OUR  
CUSTOMER SERVICE CENTER:**

TEL.: +49 172 313 06 73 (EUROPE)

TEL.: +1 201 573 9459 (USA)

TEL./FAX: +375 17 216 14 36 (CIS)

ТЕЛ.: +7 499 754 57 59 (RUSSIA)

SUPPORT@INTEGRUMWORLD.COM

WWW.INTEGRUMWORLD.COM